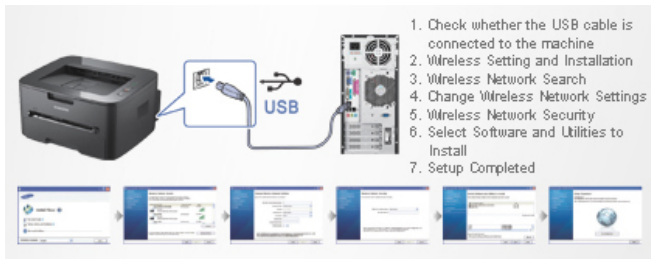


# Samsung Monochrome Laser Printer ML-2525W.

When businesses are adapting to ever-changing technologies the Samsung ML-2525W ensures that the 5 minute plug-and-go installation process is as quick and simple as using the printer itself.

## Quick and simple wireless connectivity



## AnyWeb print



For stress-free installation to a wireless connection, the Samsung ML-2525W offers complete convenience. Previously, installation could take up to 30 minutes. However, the Samsung ML-2525W utilises a high speed connection offering users a 5-minute, single-step installation process. Such easy installation lets users set up the wireless printer quickly and efficiently.

Samsung's AnyWeb Print is a quick and easy way of pulling web information together. It allows you to select, drag and drop content from different web pages into a new blank page on screen. You can then save this page as a tiff file or pdf. Alternatively, print using the Print Screen button or your normal print menu.

## Wireless printing



Wireless printing is a future-proof benefit for wireless networks. It allows users greater flexibility and also enhances the productivity across the business. Wireless printing is versatile and can save considerable time and money by being able to place printers where they are needed without having to worry about network cables. These devices are easily adaptable for quick office modification and administration.

## Streamlined design



### 1. Output cover

As well as adding to the streamlined look, the output cover also helps to keep the printing noise level down, ensuring a tranquil office environment and minimising disturbance to your co-workers.

### 2. Control panel

The stylish design complements any office environment yet also offers practical advantages. The power switch is conveniently located on the top, making it easier to turn on/off.

### 3. Enclosed cassette tray

The Samsung ML-2525W uses a cassette-type paper feed system. This protects print media from dust and keeps the interior of the machine clean. With a capacity of 250 sheets

## Cartridge options for your budget needs



The Samsung ML-2525W also offers a choice of consumables to meet your cash flow needs. High yield toner cartridges, which are ideal for heavy users, last longer and give you lower costs per page. Optionally, low yield toner cartridges have the advantage of lower initial outlay.

the Samsung ML-2525W guarantees reliable professional prints.

#### 4. Stylish

With its streamlined exterior, this mono laser printer is designed to fit perfectly into any professional business, helping to add a touch of style.

