



KONICA MINOLTA

bizhub C652 / C552

Enterprise Document Solutions. Evolved.



Model shown with options.

A4 Monochrome **65** pages/min
A4 Full Color **50** pages/min
bizhub C652

A4 Monochrome **55** pages/min
A4 Full Color **45** pages/min
bizhub C552

The essentials of imaging



The solutions of

Document Solutions For The Way You Work

When it comes to your document management needs, Konica Minolta has a range of products built to help you succeed. We call them The Solutions of i. These solutions, which include our extensive lineup of MFPs, printers, and software applications, were designed for you, the individual. They provide inspiration to help you be more creative, allow the rapid and seamless flow of information and offer easier integration with existing IT environments.

<http://www.solutions-of-i.com>





Rethought, redesigned, reengineered. Remarkable.

Built on the success and prowess of our previous black bizhub, the new bizhub takes document solution technology even further. These new top-of-the-line models were redesigned and reengineered, with you in mind—to better accommodate the way you work. Primarily used as the central MFPs in large and mid-sized offices, these machines are now easier to use, produce higher quality documents, boast higher reliability and productivity, as well as lower TCO, and are compatible with a variety of network environments. From features that enable you to communicate and collaborate better; to management and security features that ensure accountability; to usable design that allows you to work more comfortably; the new bizhub gives you the technology you need to succeed. Take a look inside to see the numerous new or improved features and functions of this exceptional machine.

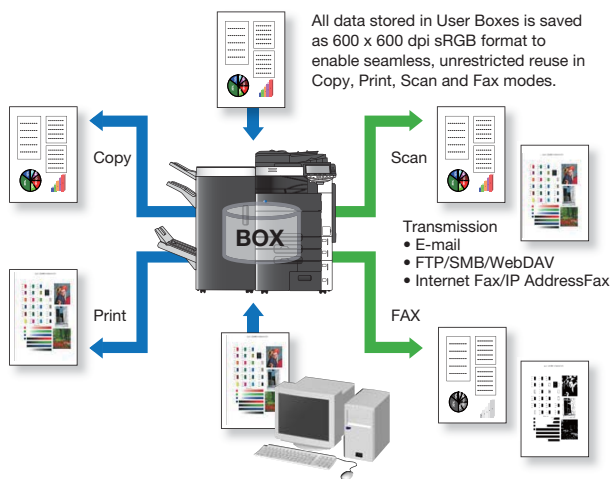


bizhub C652/C552

Communicate more effectively.

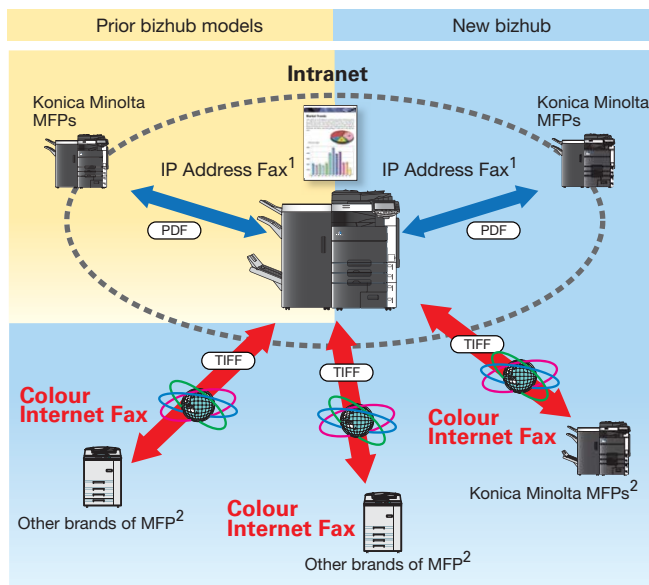
Expanded Box Function

The new bizhub's hard disk drive Box function allows users to save scan, copy, print or fax data to the Box. It also permits boxes to be assigned to individuals, project teams, departments or themes for more reliable storage (up to 3,000 documents or 10,000 pages), seamless distribution and easier sharing of knowledge. Now, the Box also includes functionality that allows users to change print and send settings for files residing in the Box—switch from colour to black & white, change resolution, enlarge/reduce and more.

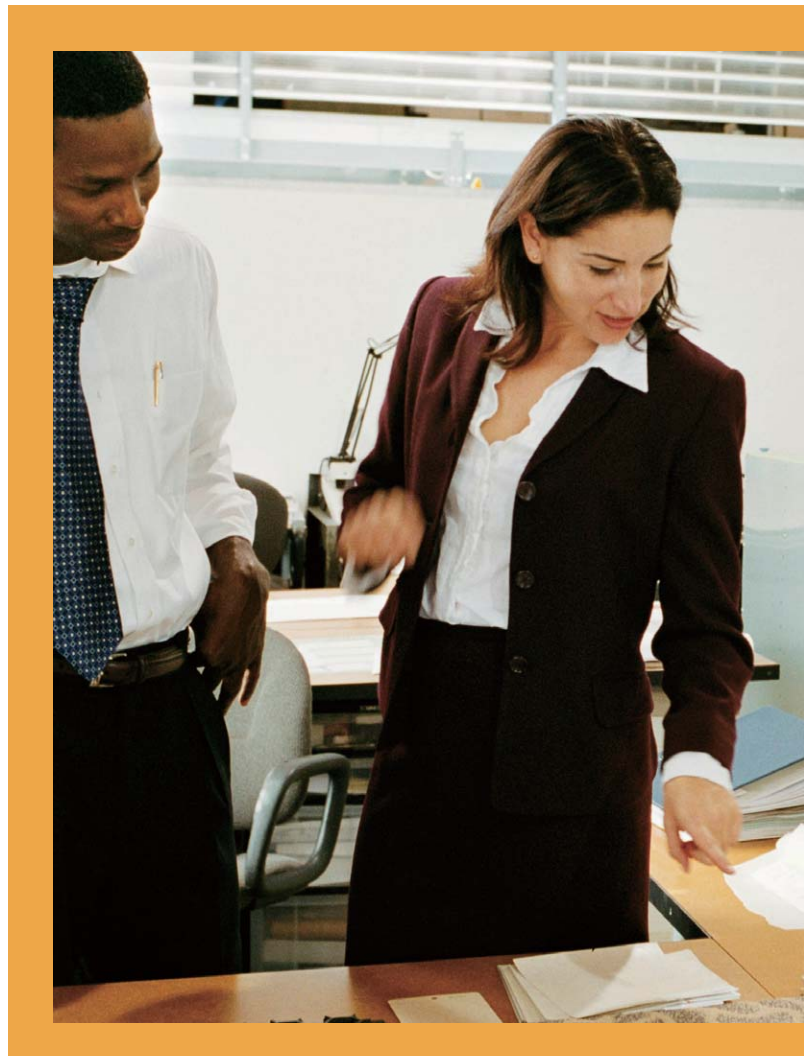


New Colour Internet Fax

The bizhub's standard Colour Internet Fax allows you to cost-efficiently send a colour or black & white fax to any MFP that supports the Profile C standard, even machines outside of your network. Because this method uses the internet, no additional costs are associated with it.



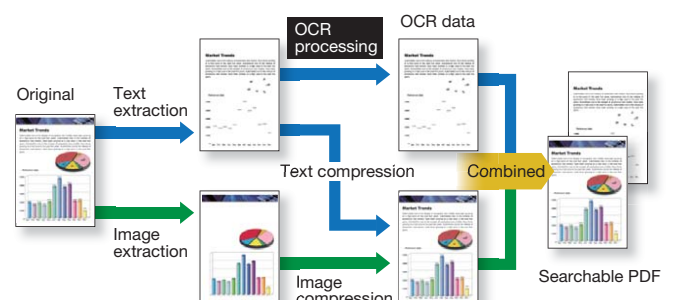
1 Optional Fax Kit FK-502 and Mount Kit MK-720 are required.
2 MFPs supporting Profile C standard.



New Searchable PDF* (Available soon)

Normally, the text of a scanned document cannot be searched. Our Searchable PDF feature uses OCR (Optical Character Recognition) to turn any scanned document into a searchable one. Perfect for quickly finding text in large documents, or to cut and paste text from a Searchable PDF to create new documents.

* Requires optional i-Option LK-105 (Available soon) and Upgrade Kit UK-203.





From scanning to sending, the bizhub has made my work group more efficient than ever before. Especially when used with the bizhub's hard drive Box function. The bizhub allows me to scan a document and save it to the Box in any number of file formats, including Compact PDF/XPS, JPEG and TIFF. When using i-Option, I can also save documents as a Searchable PDF. The bizhub's colour Preview feature allows me to clearly see my scanned image on the control panel—perfect when viewing or sending saved scans. Finally, when I want to retrieve and send the data, I can choose to do so in black & white or colour and in many resolution sizes, which comes in handy when sending colour Internet faxes from the Box. These features are instrumental to our workflow and are ideal solutions for any business that shares or transfers colour documents frequently.*

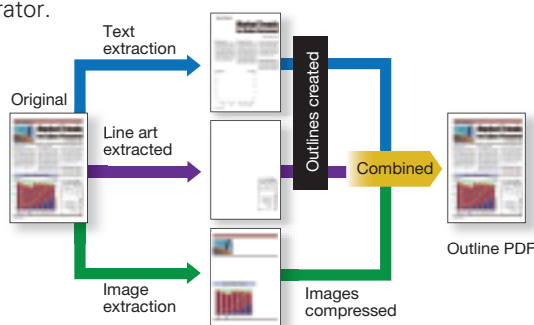
**Available soon*

*Account Manager
Multinational Advertising Agency*

The solutions of

■ New Outline PDF (Available soon)

By selecting Outline PDF when scanning a document, target images are divided into photo areas and text areas, and outline conversion is performed on the text areas. This makes the text easier to read, the images crisper and the document nearly as easy to handle as a Compact PDF. Image quality and data size of the photo areas can be finely adjusted in user mode, enabling the creation of highly-precise PDFs. The outlined data can also be conveniently utilised in graphics programs such as Adobe Illustrator.



■ i-Option

Select your i-Option functions based on your individual usage needs and environment. i-Option helps you enhance your bizhub's capabilities by offering greater convenience and customisation. Utilise the bizhub's control panel as a general purpose Web browser* that enables PDF files to be previewed, downloaded and printed without a PC. The Image Panel function* divides the control panel into three areas — input, edit and output and allows each to be customised based on your needs, thus improving your workflow.

■ Upgraded AJAX-Supported Web Browser

Our new i-Option, Web browser function can now utilise Web pages built using AJAX (Asynchronous JavaScript and XML). Many Web sites today, like Google Maps, use AJAX programming to asynchronously retrieve data without altering the display of the page being viewed.



* Requires optional i-Option LK-101 v2 or LK-103 v2 and Upgrade kit UK-203.

■ Other New or Improved Features

- NEW Mobile Phone Services – Print Files/Reference Prints from Mobile Phones¹ (Available soon)
- NEW Automatic Access Key Display for USB Flash Memory Devices (Available soon)
- IMPROVED Fax/Scan Operability
- NEW Acquiring Address Information from the MFP when Using PC-FaxTransmission
- NEW Publication Service

■ Existing Features

- Super G3 FAX² •One-Scan ACS/Mixed Original Scanning
- Scan to FTP •Scan to E-mail •Scan to SMB •Scan to Box
- Scan to WebDAV •TWAIN Scan •Scan to USB
- Multi-Method Send •XPS Support and DPWS •Compact PDF
- PageScope Box Operator •PC-Fax Function²
- IP Address Fax² •TSI Routing² •Fax Security Functions²
- Address Registration/Programmed Transmission
- Fax Sub Line³ •Transmission Result Report

¹ Requires the optional Local Interface Kit EK-605 (Available soon). Not available in all areas.

² Optional Fax Kit FK-502 and Mount Kit MK-720 are required.

³ Requires an installed Fax Kit FK502 for Fax Main Line as well as additional Fax Kit FK-502 for Fax Sub Line.

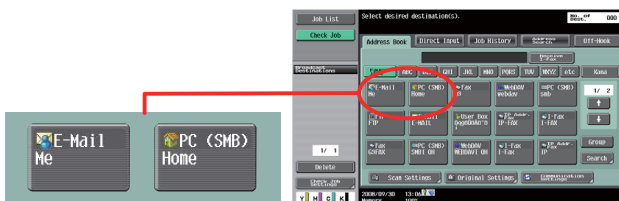
■ Options Required for Fax Features

	Fax Kit FK-502	Mount Kit MK-720
Super G3 FAX	✓	✓
Fax Sub Line	✓(See 3 above)	
PC-Fax Function	✓	✓
IP Address Fax	✓	✓
Internet FAX	Standard	

Manage more securely and cost-effectively.

■ New Scan to Me and Scan to Home

Scanning to yourself is now easier than ever with Scan to Me. If user authentication is set, selecting the "Me" one-touch key in the address book allows scan data to be sent to the user's own e-mail address. Use the Scan to Home feature to send the data to a registered PC. These simple but useful security features allow administrators to limit or disable any scan and send traffic outside of these ranges, effectively restricting where scans can be sent.



■ New Log Management

Our new log management features help you better manage usage and costs for your office's new bizhub. The log has been expanded to allow logs to be compiled for counts and accounts, as well as the existing capability for audits. This means that the bizhub doesn't just record which users have performed which jobs. It also records paper size, number of copies made and other useful cost and resource management information. Unlike current management systems, where log data was only collected in real time, the new Log Management Utility* can compile logs at specified times and perform account, count and security management.

*Available soon: Initially, the Log Management Utility will only export logs from PageScope Web Connection.

■ PageScope Enterprise Suite

The Web-based PageScope Enterprise Suite provides you with solutions to empower your MFP as well as your business by offering centralised management of accounting, authentication and device information. The suite includes Account Manager, Authentication Manager, My Panel Manager and Net Care Device Manager, and systematically links applications, integrating and sharing them seamlessly on one server. This results in much easier operation and better-integrated management.

■ Improved Non-Contact IC Card Authentication*

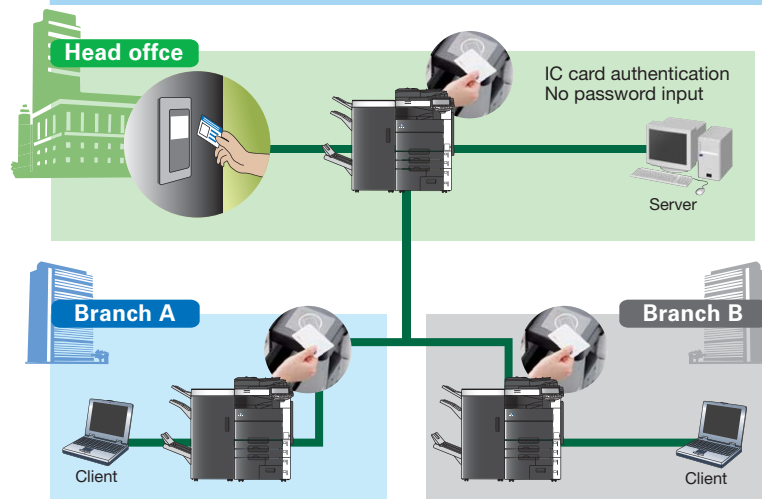
Perfect for individual user authentication, IC cards allow your organisation to restrict copy, print, scan and fax functions. For the new bizhub, a function has been added that allows LEGIC, MIFARE, FeliCa (SSFC Format) and HID iCLASS (Available soon) cards to be used to access data in high-security areas, making it possible to perform high-level, multi-functional authentication management, such as synched operation with room entry and exit management.

*Optional Authentication Unit AU-201 required.



In a large and dispersed company like ours we need IT solutions that help us stay secure. With our bizhub, we're able to utilise PageScope Enterprise Suite software, specifically Authentication Manager, to administer all of the bizhub's security measures, like the use of our Non-Contact IC Card Authentication. Though providing a high level of security, the bizhub's tools have proved surprisingly easy to use and versatile. IC Card

*IT Solutions Architect
Insurance Company*





authentication is password-free and helpful to us in numerous ways. Its primary utilisation is as an authentication method for the bizhub that permits employees to make use of the bizhubs on different floors, in different departments, or even at a branch office. Its flexibility has also allowed me to utilise the card throughout the organization for entry and exit management, as an employee ID card. In short, these solutions help me, and my company, rest easy.

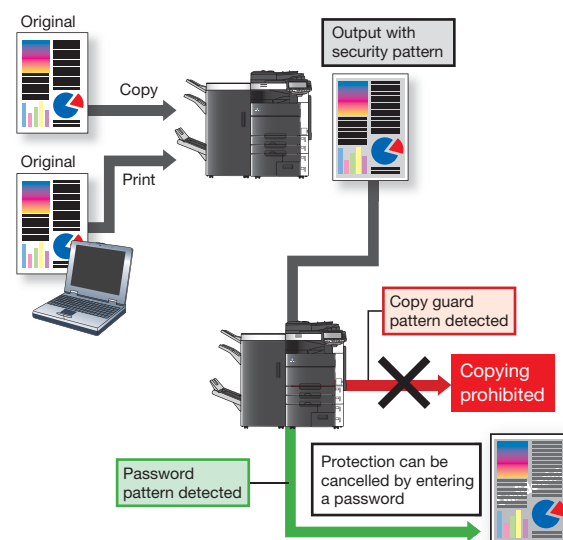
The solutions of 



■ Copy Security (Copy Guard and Password Copy)* (Available soon)

By copying or printing documents with a special security pattern, C652/C552's Copy Guard prevents unauthorised copies from being made on the C652/C552. The Password Copy feature allows this protection to be cancelled by entering a password before attempting to re-copy the document.

* Optional Security Kit SC-507 is required.
Work only on bizhubs with these features installed.



■ New IEEE 802.1X Compatibility

The new bizhub now comes with a client module supporting the IEEE 802.1X authentication standard. This enables you to connect to secure networks, effectively shutting off all communication from unauthorised clients, and only allowing authorised users to connect.

■ Other New or Improved Features

- NEW Standard HDD Data Encryption
- NEW NDS Authentication over TCP/IP

■ Existing Features

- Secure Print
- User Authentication
- Encrypted PDF
- Copy Protection
- Annotation Function
- IP Filtering
- SSL/TLS Encryption
- S/MIME
- HDD Auto Deletion
- HDD Lock
- Department Management
- PageScope Data Administrator
- PageScope Workware (Optional)

■ Improved Biometric Finger-Vein Authentication*

The bizhub's finger vein authentication uses images of finger vein patterns captured by scanning the finger. This biometric measurement uses an internal characteristic as identification, and is nearly impossible to falsify. The unit is remarkably easy to install as an option and now offers improved authentication accuracy and a more ergonomic and efficient shape that blends in with the design of the MFP.

*Optional Authentication Unit AU-102 required.



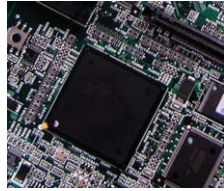
■ ID & Print

Working in conjunction with finger-vein and IC card authentication, our easy-to-use ID & Print feature provides you with a secure printing environment. After sending a document from your PC to the bizhub, simply touch the bizhub with your finger or IC card to automatically begin printing—there's no need to enter a password. If you choose, you can also use the ID & Print feature without the biometric unit or IC cards by entering your password directly on the control panel.

Increase productivity and performance.

■ High Image Quality

The new bizhub employs a new MFP Controller—the heart of the MFP—and a new image ASIC (application-specific integrated circuit). Due to these new technologies, overall image quality is markedly improved.



■ Higher Productivity

The new bizhub makes you more productive with lightning-fast and high performance printing, copying and scanning, as well as very low product downtime. To begin with, we've greatly decreased the machine's warm-up time to a brief 45 seconds¹, to help you get to work as quickly as possible. And now, the C652 and C552 also boast some of the fastest first copy times on the market at a class-leading 5.5 and 6.0 seconds in colour respectively. Moreover, these machines can simultaneously handle multiple jobs such as fax and scan, scan and print, print and save to Box or perform a multitude of other concurrent combinations. The new bizhub also has the ability to produce presentation-quality print/copy outputs quickly and efficiently (C652: 50 ppm/colour, 65 ppm/B&W: C552: 45 ppm/colour, 55 ppm/B&W). When it comes to scanning, these bizhubs allow you to convert large volumes into electronic data with the high-speed, sheet-through Automatic Document Feeder. Scan colour or black & white originals at 78 pages/min². The ADF can also handle postcard-size paper and scan both thick and thin paper (35-210g/m²) at the same speed as plain paper.

¹ Warm-up time may vary depending on the operating environment and usage.
² 300dpi, A4 Crosswise

■ Upgraded Emperon Print System

Konica Minolta's proprietary Emperon printer controller boasts a host of new features, functions and compatibilities designed to increase print performance, making it our best Emperon ever.



•**Black Over Print*** This new feature helps ensure that areas meant to be in black are not inaccurately rendered in white — a potential problem when printing black on colours during 4-colour printing.

•**Auto-Trapping*** In Auto-Trapping Mode, the white borders between colours are printed using an optimal colour from surrounding colours, eliminating incorrect registration.

•**PPML-Variable Data Printing (VDP)*** The new bizhub now supports PPML (Personalised Print Markup Language), a technology designed for high-speed variable printing output.

•**Support for PDF 1.7** The new bizhub supports the PDF 1.7 version. This enhanced PDF version offers more interactive printing, security and CMM (Colour Management Module) features.

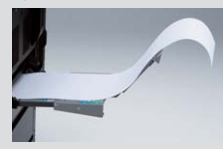
* Used in conjunction with PS Print.



■ Large-Capacity Paper Supply and Varied Paper Compatibility

The new bizhub holds up to 3,650 sheets of paper. With the optional Side Paper Deck LU-301, the bizhub's capacity increases to 6,650 sheets! The bizhub handles a wide range of paper size from A6 to A3 wide, with our new, optional, large-capacity LU-204 also boasting an impressive A3 wide capacity. Finally, the bizhub also accommodates thick paper up to 256g/m² in all but its multiple bypass tray, where it handles paper as thick as 300g/m².

<MK-715>
Holds 10 sheets of
Long Length Paper
up to 297mm x 1,200mm



Not compatible with
Finisher FS-526

<Tray 1>
Max. A3 Wide 500 sheets(80g/m²:A4)

<Tray 2>
Max. A3 Wide 500 sheets(80g/m²:A4)

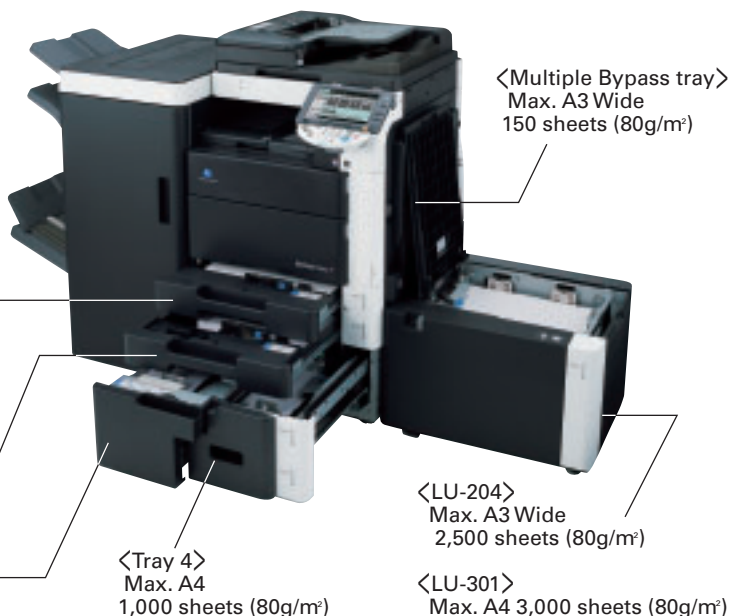
<Tray 3>
Max. A4 1,500 sheets (80g/m²)

With over 3,000 faculty members on the main campus competing for production time, speed is essential to us here at the university, but not at the expense of quality or high downtime. Luckily, we don't have to sacrifice any of these attributes with the bizhub. These machines churn out up to 50 high quality colour pages* per minute. The Multi Job feature is also indispensable because it allows our faculty to perform multiple actions at the same time, like scanning and sending or scanning and printing. This means that when a professor or his assistant comes running into the office 15 minutes before class, they're going to get what they need to get done easily and efficiently and with minimal downtime.

*bizhub C652

Director of Faculty Operations
Large University

The solutions of 



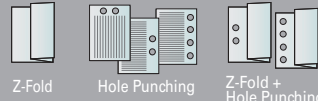
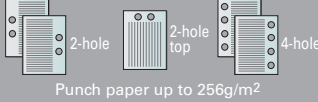
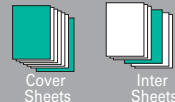
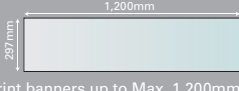


Professional and Versatile Finishing

Create professional presentations, attractive manuals, proposals, banners¹ and even direct mail pieces without sending materials to a printer. Combined with the C652/C552, the optional Finisher FS-526 gives you efficient, print-on-demand versatility. This high performance finisher features automatic stapling, hole punching², saddle stitching³, Z-folding⁴ and many other finishing tasks, allowing you to take on both large and small-volume jobs in-house.

- 1 Optional Banner Paper Setting Guide MK-715 is required.
- 2 Optional Punch Kit PK-516 or Z-Folding Unit 606 is required.
- 3 Optional Saddle Stitcher SD-508 is required.
- 4 Optional Optional Z-Folding Unit ZU-606 is required.

Finishing Tasks and Necessary Options

Stapling Function	 Up to 100 sheets	Finisher FS-526
Booklet Function & Folding Function	 Up to 20 sheets	Finisher FS-526 + Saddle Stitcher SD-508
Z-Folding Function & Hole Punching Function⁵	 Z-Fold Hole Punching Z-Fold + Hole Punching	Finisher FS-526 + Z Folding Unit ZU-606 (Available soon)
Hole Punching Function	 Punch paper up to 256g/m ²	Finisher FS-526 + Punch Kit PK-516
Cover Sheets & Inter Sheets	 Cover Sheets Inter Sheets	Standard or Finisher FS-526 + Post Inserter PI-505 (Available soon)
Long Length Paper⁶	 Print banners up to Max. 1,200mm long.	Banner Paper Setting Guide MK-715

⁵ Optional ZU-606 (which includes Hole Punching Function) supports paper ranging from 64 to 90 g/m².

⁶ Not compatible with Finisher FS-526

Other New or Improved Features

- NEW Non-Image Area Erase
- NEW Watermark Copy Function
- IMPROVED Overlay Function
- NEW Card Shot (Available soon)
- NEW Fiery Image Controller IC-412 (Optional)

Existing Features

- 100% Duplex Productivity
- ADF Dust Reduction
- ICC Profile Supported (PS Driver only)
- Booklet Printing
- Print Status Notification
- Confirming Copy/Print Jobs

Designed for the way you work.

■ Improved Colour LCD Control Panel

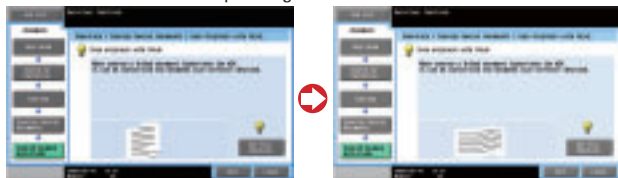
The user interface of the bizhub's innovative colour control panel boasts an 800 x 480 pixel, colour, touch-screen, LCD display, and the ability to enlarge text. New to the panel is a convenient stylus pen and holder at the top as well as a colour-coded "power area" in the upper right corner that makes viewing power status simple. The blue LED start-up button and indicator lamps on the control panel are also easy to read, particularly for those with colour vision difficulties. The entire panel can also be tilted up and down in 3 stages as well as left and right, making it accessible to just about anyone.



■ New Guidance Workflow and Animation Guidance

The new bizhub boasts new help features. The Guidance Function now provides an improved workflow. Simply press the "Guidance" key and you will be immediately taken to the help information relevant to the feature you're engaged with. Our new bizhub also offers interactive Animation Guidance of certain features and troubleshooting tasks. This provides more visual direction of operating tasks and troubleshooting help for procedures like paper jams and toner replacement.

Animation Guidance for Operating Procedures

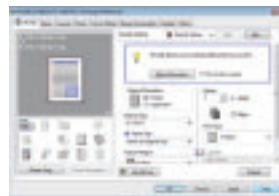


Animation Guidance for Troubleshooting



■ My Tab Printer Driver Screen

Customise your own tab on the printer driver screen. Add, remove or change the location of features to suit your needs.



■ Universal Design

The bizhub was designed to insure that anyone, regardless of age, gender, body size, or disability could comfortably use it. Specifically, the new bizhub provides a clear, easy to read control panel, trouble-free front access to paper and toner and easy-grip trays.

■ Quiet Operation

The new bizhub offers quieter operation. We have paid particular attention to the more bothersome machine noises, and have reduced the operating noise level, as well as that of stand-by mode, ADF scanning and our finisher.

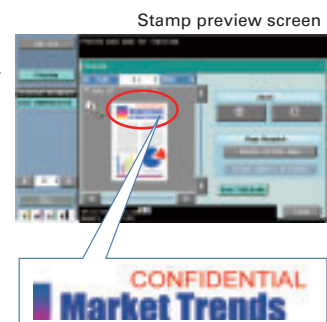


For me, so much of my success relies on how easily and efficiently I can get my work done. With that said, very few machines have made my job as trouble-free as the bizhub. The colour, LCD control panel is large, easy-to-read and intuitive. I especially appreciate its large colour Thumbnails and Previews. The My Panel Manager software, part of PageScope Enterprise Suite, is also very useful. In tandem with personal authentication, it allows my coworkers and I

*Administrative Assistant,
International Management Consulting Company*

■ Expanded Colour Previews & Thumbnails

See exactly what your image will look like before printing it. The new bizhub lets you view previews of stamps, dates, pages and more as merged images, to show you exactly how your documents will appear printed. Viewing files saved in the Box is also easier and more efficient—view them all on the control panel as thumbnails for simple file recognition.





to interface with the product in the language of our choice, essential in an international company like mine, and it lets us customise the address book. Troubleshooting and operation are also remarkably easy. If I'm ever unsure about a task, the bizhub's interactive Animation Guidance offers the assistance I need. Lastly, the bizhub is aesthetically pleasing too, with a 360-degree, wrap-around design and extremely quiet operation.

The solutions of 

■ Clean, 360-Degree Design

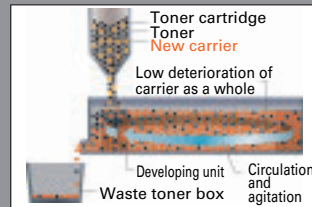
The new bizhub was designed with a 360 degree, wrap-around colour scheme. This means that the back of the machine is as clean as the front, allowing you to place it anywhere—even in the centre of a room. When utilising Fiery, the bizhub provides a covered storage area on the back for cables, thus maintaining its clutter-free look.



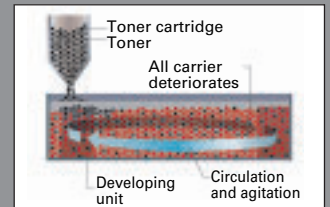
Technology Design

■ New Auto-Refining Developing System

With the new bizhub's Auto-Refining Developing System, carrier in the black developing unit is premixed in the toner cartridge and supplied as toner is consumed. Deteriorated carrier is expelled with the toner, reducing overall deterioration in the developing unit. This process helps to maintain stable black & white image quality over the long term. This feature is particularly relevant in offices that have high-volume black & white output.



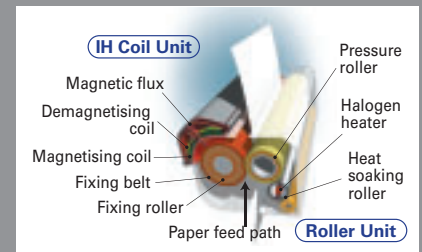
•Auto-Refining Developing System



•Conventional Developing System

■ IH Fixing

Induction Heating (IH) Fixing technology only heats the roller's surface, rather than the entire roller. This reduces power consumption during the fixing process and results in shorter warm-up times. In addition, this feature automatically cuts off residual fixing heat when no print jobs are taking place, further contributing to energy savings.

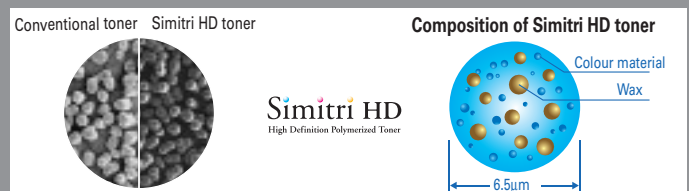


■ Three Image Stabilisation Modes

We've optimised image stabilisation control by providing three separate modes tailored to your office's printing needs. Standard Mode is perfect when overall print volume is low and colour usage is moderate. B/W Priority Mode is the best for those offices that mostly utilize black & white printing. Finally, Colour Priority Mode is the alternative that offers the most image stabilisation efficiency for high volume, colour output needs.

■ Simitri HD Toner

The small size and consistent shape of Simitri HD toner particles ensure sharp reproduction of text as well as line drawings. Its smooth outer surface provides excellent hold and promises high image quality across a diverse media mix. Furthermore, the new bizhub uses low-temperature fixing to affix the Simitri HD toner. Using less heat saves energy and effectively reduces paper stress.



bizhub C652/C552 General Specifications

Type	Console	
Colour Support	Full-Colour	
Copy Resolution	Scan	Main: 600dpi x Sub: 600dpi
	Print	Main: 1,800dpi equiv. x Sub: 600dpi
Gradation	256	
Memory Capacity (Std./Max.)	2GB/3GB	
HDD	250GB	
Original Type	Sheets, Books, Objects	
Max. Original Size	A3 (11" x 17")	
Output Size	A3 Wide, A3 to A5, B6 Lengthwise, A6 Lengthwise Thick Paper, Long Length Paper (210x457.3mm ~ 297x1,200mm)	
Image Loss	Max. 4.2mm or less for top edge, Max. 3.0mm or less for bottom edge, Max. 3.0mm or less for right/left edges	
Warm-Up Time (23°C, std. voltage) (May vary depending on the operating environment and usage.)	45 sec. or less (The time required to start printing when both the main power and sub-power switches are turned from OFF to ON.)	
	30 sec. or less (The time required to start printing when the main power switch is ON and the sub-power switch is turned from OFF to ON.)	
First Copy Time (A4 Crosswise)	Colour	C652 : 5.5 sec. or less C552 : 6.0 sec. or less
	B/W	C652 : 3.9 sec. or less C552 : 4.3 sec. or less
Copy Speed (A4 Crosswise)	Colour	C652 : 50 ppm C552 : 45 ppm
	B/W	C652 : 65 ppm C552 : 55 ppm
Copy Magnification	Fixed Same Magnification	1:1.10.6% or less
	Scaling Up	1:1.154/1.224/1.414/2.000
	Scaling Down	1:0.866/0.816/0.707/0.500
	Presets	3 types
	Zoom	25~400% (in 0.1% increments)
	Lengthwise Crosswise Individual Settings	25~400% (in 0.1% increments)
Paper Capacity (80g/m ² paper)	500 sheets (Tray 1), 500 sheets (Tray 2), 1,500 sheets (Tray 3), 1,000 sheets (Tray 4), 150 sheets (Multiple Bypass Tray)	
Paper Weight	Tray 1-4	64~256g/m ²
	Multiple Bypass Tray	64~300g/m ²
Multiple Copy	1~9,999 sheets	
Auto Duplex	Type: Non-Stack Paper Size: Width/100~311mm(4"~12-1/4"), Length/148~457mm(5-3/4"~18") Paper Weight: 64~256g/m ²	
Power Requirements	AC220~240V 10A (50Hz)	
Max. Power Consumption	C652 : 2.1kW or less C552 : 2.0kW or less	
Dimensions [W] x [D] x [H]	650mm x 879mm x 1,156mm (25-1/2" x 34-3/4" x 45-1/2")	
Weight	Approx. 221kg (487-1/4 lb)	
Space Requirements [W] x [D]	988mm x 1,525mm (39" x 60") *Multiple Bypass Tray opened	

Printer Specifications (Standard)

Type	Embedded	
CPU	MC7448 1GHz	
Memory	Shared with the copier	
Print Speed	Same as Copy Speed (when using the same original)	
HDD	250GB (Shared with the copier)	
Print Resolution	1,800dpi equiv. x 600dpi	
PDL	PCL6, PostScript 3 Emulation	
Protocol	TCP/IP, IPX/SPX (NDS support), SMB (Net BEUI), LPD, IPP1.1, SNMP, HTTP	
Support OS	Windows NT4.0 SP6/2000, SP3/XP/XP64bit/Vista/Vista64bit/Server2003/Server2003 64bit/Server2008/Server2008 64bit Mac OS 9.2 (PPDI)/X 10.2, 3, 4, 5, 10.4, 5 Intel, Linux	
Fonts	PCL	80 European fonts
	PS	137 European Type1 fonts
Interface	Ethernet (10BASE-T/100BASE-TX/1000BASE-T), Hi-Speed USB	

System Options

- Fax Kit FK-502
- Stamp Unit SP-501
- Spare TX Marker Stamp 2
- Mount Kit MK-720
Includes Fax Sub Line Connector.
- Post Inserter PI-505*
When attached to Finisher FS-526, allows you to add white paper cover sheet/inter sheet, and operate the Finisher manually. (Available soon)
- Punch Kit PK-516
Attach to Finishers FS-526 for hole punching capability.
- Saddle Stitcher SD-508
Attaches to Finisher FS-526 for saddle stitching, half folding and tri-folding jobs. Its output tray, a Universal Design feature, allows paper removal from as low as 381mm above the floor.
- Staple Kit MS-5C

- Fiery Image Controller IC-412
- Video Interface Kit VI-505
- *PI-505 and JS-602 cannot be installed at the same time.
- Job Separator JS-602* (Available soon)
When attached to the FS-526, this becomes the fax/print/copy output separator tray.
- Z Folding Unit ZU-606 (Available soon)
Includes Z-folding function and hole punching function.
- Finisher FS-526
A high-performance finisher that allows you to multi-staple up to 100sheets.
- Staples MS-10A

- Local Interface Kit EK-604
- Local Interface Kit EK-605* (Available soon)
*Not available in all areas.
- Output Tray OT-503
- Keyboard Holder KH-101
- Working Table WT-506
- Banner Paper Setting Guide MK-715
Used for banner printing. (Not compatible with Finisher FS-526)
- Large Capacity Unit LU-204
Increases the bizhub's paper capacity by 2,500 sheets for paper up to A3 wide and 80g/m² thick.
- Large Capacity Unit LU-301
Increases the bizhub's paper capacity by 3,000 sheets for paper up to A4 size and 80g/m² thick.

- Upgrade kit UK-203
- i-Option LK-101 v2
- i-Option LK-102
- i-Option LK-103 v2
- i-Option LK-105 (Available soon)

For more information please visit the bizhub Web site at <http://www.bizhubc652.com>

Product appearance, configuration and/or specifications are subject to change without notice.

The Konica Minolta logo and the symbol mark, and "The essentials of imaging" are registered trademarks or trademarks of Konica Minolta Holdings, Inc.

bizhub, PageScope, Simitri and the Emperon logo are registered trademarks or trademarks of KONICA MINOLTA BUSINESS TECHNOLOGIES, INC.

Windows is a registered trademark of Microsoft Corporation in the United States and other countries.

Adobe and PostScript are registered trademarks or trademarks of Adobe Systems Incorporated.

All other brand and product names are registered trademarks or trademarks of their respective owners.

Konica Minolta copiers and multi-functional peripherals are designed with the environment in mind.



- Have Earned ENERGY STAR for Energy Efficiency
- The Use of Recycled Materials
- Production at ISO-Certified Factories

This product has earned the ENERGY STAR for energy efficiency. ENERGY STAR is a U.S. registered mark.

Requirements for safe use

- Please read and follow the instruction manual to ensure safe operation.
- Only operate using appropriate power supply and voltage.
- Connecting the earth wire to an inappropriate place may cause explosion or electric shock. Please connect accordingly (Taiwan and the Philippines only).



This catalogue was printed using soy ink.

KONICA MINOLTA BUSINESS TECHNOLOGIES, INC.

1-6-1 Marunouchi Chiyoda-ku, Tokyo, Japan
<http://www.biz.konicaminolta.com>